

Anderson School Map

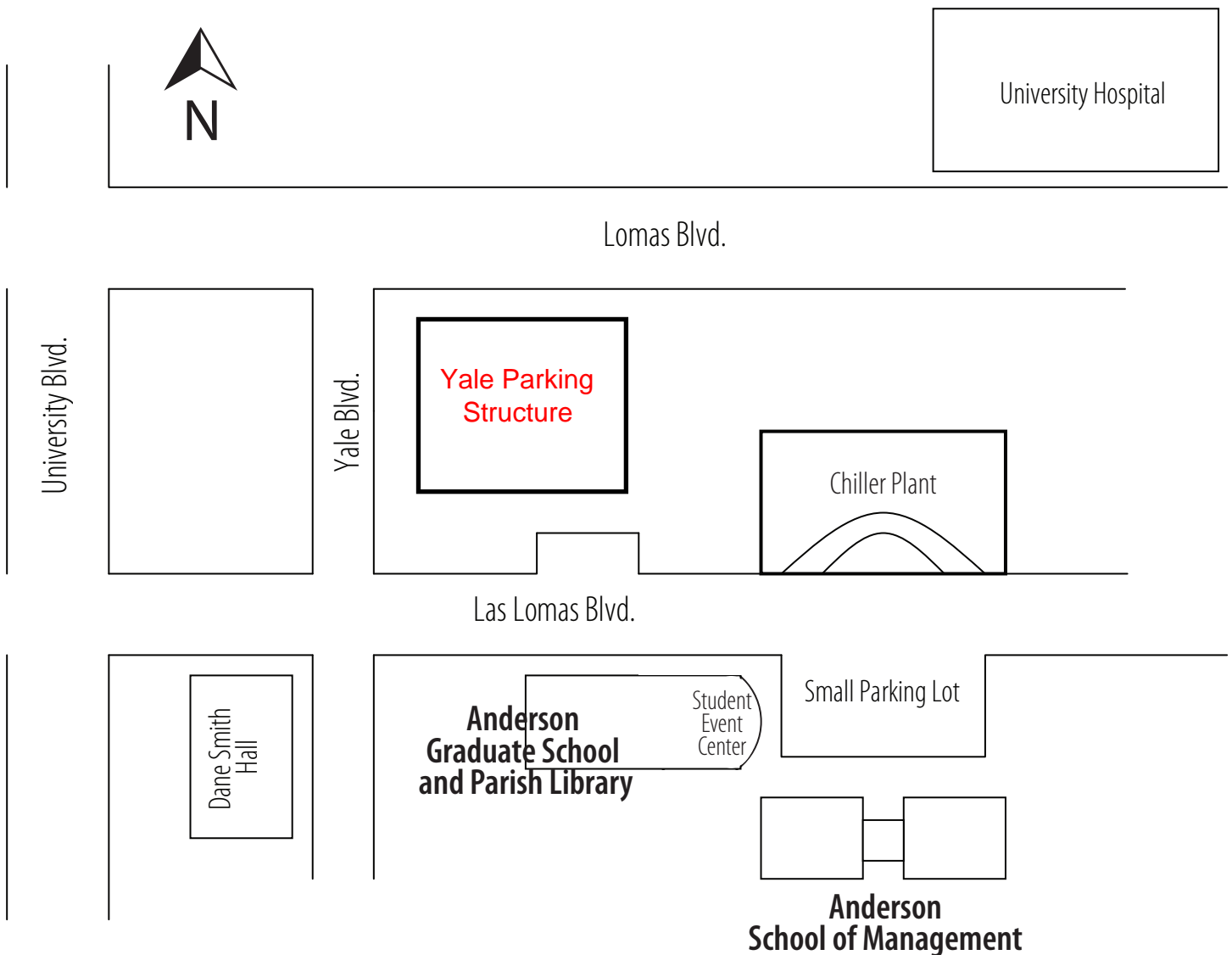
www.mgt.unm.edu

Anderson Main Desk: (505) 277-6471

Management Development Center: (505) 277-2525

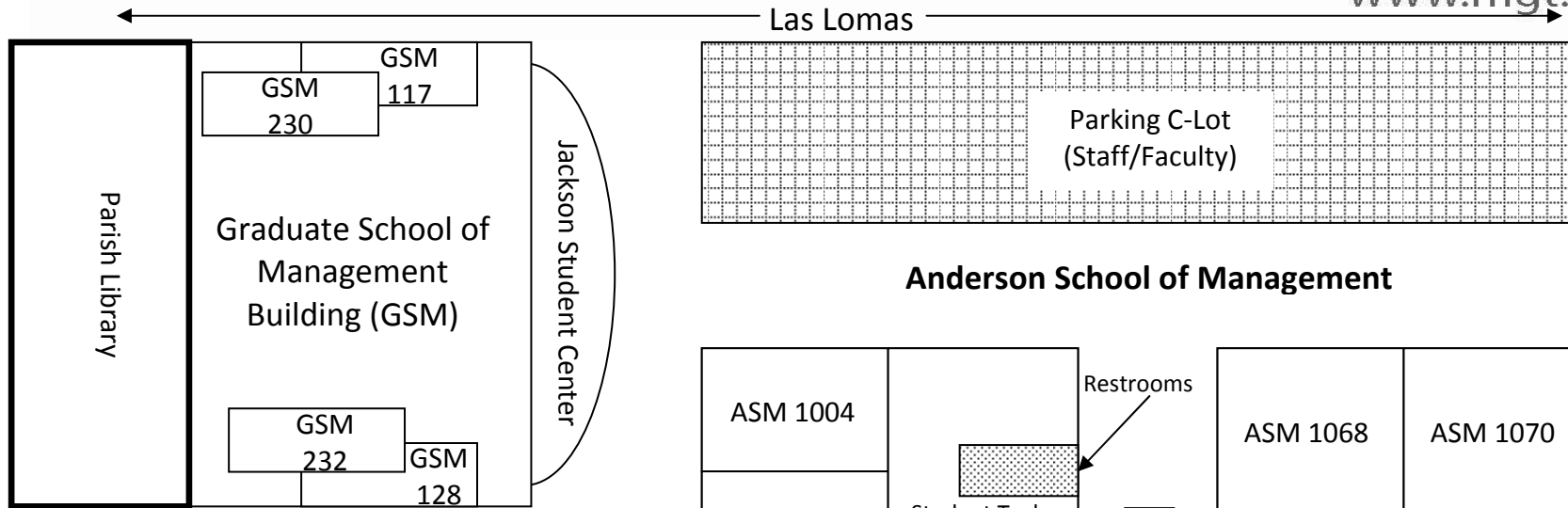
DIRECTIONS

From I-25/frontage road, go east on Lomas Blvd. At Yale Blvd., turn right (south). Turn left at the four-way stop, which is Las Lomas Blvd. The Anderson School buildings are on the right-hand (south) side of the street.



Anderson School of Management Campus Map

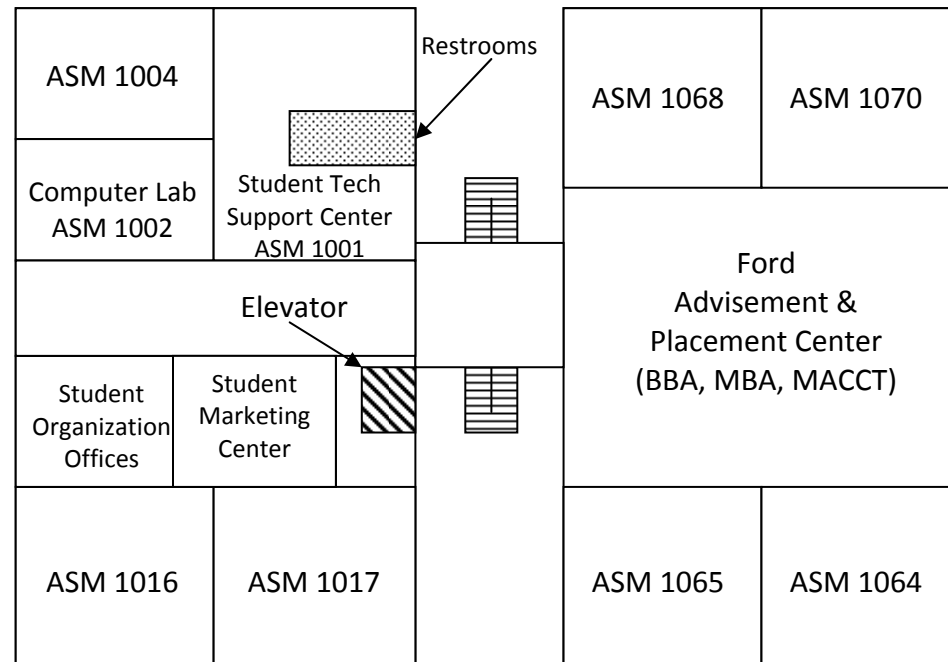
www.mgt.unm.edu



GSM Building

- 1st Floor
 - GSM 117
 - GSM 128
 - Jackson Student Center
 - Parish Library
- 2nd Floor
 - GSM 230
 - GSM 232
 - Financial Center
 - Small Business Institute
 - NM Ethics Alliance
- 3rd Floor
 - Management Development Center: Executive MBA, Management Certificate Programs
 - Faculty Offices
 - GSM 302
 - GSM 318

Anderson School of Management

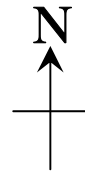


Anderson West Wing

- ### 2nd Floor
- Reception Desk
 - Accounting Lab, 2059
 - Anderson Development Office
 - Faculty & Staff Offices

Anderson East Wing

- ### 2nd Floor
- ASM 2141 Classroom
 - Faculty & Staff Offices

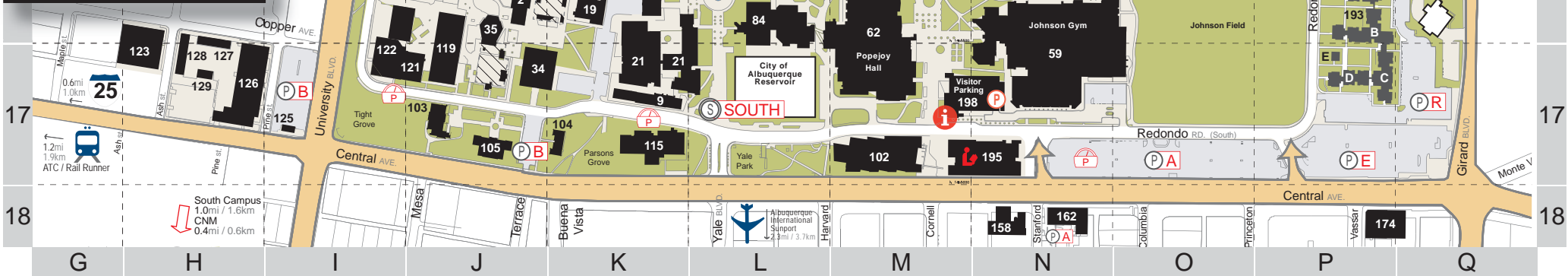


Legend

- Visitor / Info Center
- UNM Building
See Campus Building List for building No.
- Student Housing
- Food Services
- UNM Campus Library
- Hospital
- Parking Structure
- Metered Parking
- Surface Parking Lot
- Permit Type Required
- UNM Parking Shuttle

Campus Index Map

Indian School
NORTH CAMPUS
Lomas
Central
Yale
SOUTH CAMP
Avenida Caesar Chavez
2.3 mi / 3.7 km



 THE UNIVERSITY OF NEW MEXICO CAMPUS MAP LEGEND BY BUILDING NUMBER

#	BUILDING NAME	GRID	#	BUILDING NAME	GRID
---	---------------	------	---	---------------	------

CENTRAL CAMPUS

2	ENGINEERING AND SCIENCE COMPUTER POD (ESCP)	J-16
4	CARLISLE GYMNASIUM (CARL)	K-16
8	BANDELIER HALL EAST (BANDE)	J-15
9	MARRON HALL (MARN)	K-17
10	SCHOLES HALL (SCHL)	K-14
11	ANTHROPOLOGY (ANTHO)	J-14
12	ANTHROPOLOGY ANNEX (ANTHX)	J-16
14	SCIENCE & MATH LEARNING CENTER (SMLC)	J-15
15	HIBBEN CENTER FOR ARCHAEOLOGY RESEARCH (HIBB)	J-15
16	BANDELIER HALL WEST (BANDW)	J-15
19	BIOLOGY ANNEX (BIOANX)	K-16
21	CASTETTER HALL (CAST)	K-17
22	CLARK HALL (CLARK)	K-15
23	MITCHELL HALL (MITCH)	K-15
24	NORTHROP HALL (NTHP)	K-16
25	ALUMNI MEMORIAL CHAPEL (ALUMND)	J-15
29	DISPUTE RESOLUTION (DISP)	K-14
34	LOGAN HALL (LOGAN)	J-17
35	REGENER HALL (REGH)	J-16
42	EQUAL OPPORTUNITY PROGRAMS (EOP)	J-14
44	TITLE V & MENTORING INSTITUTE	J-13
46	ELECTRICAL AND COMPUTER ENGINEERING/CENTENNIAL LIBRARY (EECE)	J-16
48	DANE SMITH HALL (DSH)	K-14
51	UNIVERSITY HOUSE (UNIVH)	L-14
53	ZIMMERMAN LIBRARY (ZIMM)	L-15
56	MESA VISTA HALL (MVH)	N-16
57	ECONOMICS (ECON)	M-14
58	HOKONA HALL (ZUNI-OFFICES, ZIA-DORMITORY) (HOKW)	N-14
59	JOHNSON CENTER (JOHNS)	N-17
60	STUDENT UNION BUILDING (SUB) (NMU)	M-16
61	SANTA CLARA HALL DORMITORY	O-14
62	CENTER FOR THE ARTS (POPEJOY, KELLER HALL, FINE ARTS MUSEUM) (CTRART)	M-17
64	TECHNOLOGY & EDUCATION CENTER (TECH)	N-14
65	TRAVELSTEAD HALL (TRAV)	M-14
66	SIMPSON HALL (SIMP)	N-14
67	EDUCATION CLASSROOMS (EDUC)	M-15
68	MASLEY HALL (MASLEY)	N-15
69	KIVA (KIVA)	N-15
70	MANZANITA CENTER (MANZ)	N-15
71	SANTA ANA HALL (DORMITORY)	P-15
73	STUDENT HEALTH CENTER AND UNDERGRADUATE STUDIES (SHC)	M-16
74	LAGUNA HALL (DORMITORY) (LAGUNA)	O-14
75	DEVARGAS HALL (DORMITORY) (DEVARG)	O-14
76	ANDERSON SCHOOL OF MANAGEMENT (ASM)	M-14
77	LA POSADA DINING HALL	O-14
78	SOCIAL SCIENCES (SSCO)	M-14
79	ORTEGA HALL (ORTG)	L-15
81	HUMANITIES (HUM)	L-15
82	WOODWARD LECTURE HALL (WOOD)	L-16
83	CONSORTIUM FOR ENVIRO. RESEARCH, INFORMATICS & ART (CERIA)	L-16
84	ART (ART)	L-16
85	UNIVERSITY ADVISEMENT & ENRICHMENT CENTER (UAEC)	N-15
87	ANDERSON GRADUATE SCHOOL OF MANAGEMENT / PARISH LIBRARY (GSM)	M-13
88, 89, 90	STUDENT RESIDENCE CENTER (SRC)	O-15
102	BOOKSTORE	M-17
103	HODGIN HALL (HODGIN)	J-17
104	SARA RAYNOLDS HALL (SARAR)	K-17

CENTRAL CAMPUS cont.

105	ART ANNEX (ARTX)	J-17
112	CENTENNIAL ENGINEERING CENTER (CRC)	J-16
115	COMMUNICATION AND JOURNALISM (COMMJ)	K-17
116	FORD UTILITIES CENTER	J-15
119	FARRIS ENGINEERING CENTER (FEC)	J-17
122	MECHANICAL ENGINEERING (MECH)	I-17
123	MATTOX SCULPTURE CENTER (MATTOX)	H-17
125	PARKING SERVICES	I-17
126	HIGH PERFORMANCE COMPUTING / ART, RESEARCH, TECH & SCI LAB	H-17
140	HUBER HOUSE	P-14
150	STUDENT SUPPORT SERVICES / DEAF & HARD OF HEARING SERVICES (SSDHH)	L-13
151	NAVAL SCIENCE (NAVAL)	L-13
152	JONSON GALLERY/RWJF (JONGAL)	L-13
153	INFORMATION TECHNOLOGIES BUILDING (ITB)	P-13
155	CORONADO HALL (DORMITORY)	P-16
156	ONATE HALL (ONATE)	K-15
157	ALVARADO HALL (DORMITORY) (ALVRDO)	P-15
159	AEROSPACE STUDIES BUILDING (AERO)	I-12
160	UNIVERSITY CLUB (UCLUB)	M-13
162	TAMARIND INSTITUTE	N-18
165	LATIN AMERICAN/IBERIAN INSTITUTE (LAIH)	L-13
168	BUREAU OF BUSINESS AND ECONOMIC RESEARCH DATA BANK (DATA)	M-13
171	SOUTHWEST HISPANIC RESEARCH INSTITUTE AND CHICANO STUDIES (SHRI)	K-12
172	PARKING STRUCTURE	O-13
174	INSTITUTE FOR: SOCIAL RESEARCH / ENVIRON. EDU / ASSISTED TECH (ISR)	P-18
175	ARMY ROTC (ARMY)	K-12
178	SIGMA PHI EPSILON FRATERNITY	J-12
179	PHI DELTA THETA SORORITY	J-12
182A, B, C	LATIN AMERICAN DATA BASE AND LATIN AMERICAN OUTREACH	L-12
183	JOHN AND JUNE PEROVICH BUSINESS CENTER	J-11
184	COUNSELING, ASSISTANCE AND REFERRAL SERVICE (CARS)	K-12
185	INSTITUTE FOR PUBLIC POLICY	K-12
187	EXTENDED UNIVERSITY	K-13
191	HOUSE OF PREVENTION EPIDEMIOLOGY (HOPE)	K-13
192	PSYCHOLOGY CLINIC / AGORA CRISIS CENTER (PSYC)	K-13
193A-E	REDONDO VILLAGE STUDENT RESIDENCES	P-16
195	GEORGE PEARL HALL (PEARL)	N-17
198	PARKING STRUCTURE / UNM WELCOME CENTER	M-17

POINTS OF INTEREST

ADVISEMENT & ENRICHMENT (BLDG #85)	N-15
EXPERIMENTAL THEATRE (CENTER FOR THE ARTS - BLDG #62)	M-17
FINE ARTS LIBRARY (GEORGE PEARL HALL - BLDG #195)	N-17
GEOLOGY MUSEUM (NORTHROP HALL - BLDG #24)	K-16
GREENHOUSE CONSERVATORY (CASTETTER HALL - BLDG #21)	K-17
HOUSING (BLDG #58)	N-14
HUMAN RESOURCES (JOHN AND JUNE PEROVICH BUSINESS CENTER - BLDG #183)	J-11
JONSON GALLERY (CENTER FOR THE ARTS - BLDG #62)	M-17
KELLER HALL (CENTER FOR THE ARTS - BLDG #62)	M-17
MASLEY HALL ART GALLERY (BLDG #68)	N-15
MAXWELL MUSEUM (ANTHROPOLOGY - BLDG #11)	J-14
METEORIC MUSEUM (NORTHROP HALL - BLDG #24)	K-16
POPEJOY HALL (CENTER FOR THE ARTS - BLDG #62)	M-17
RODEY THEATRE (CENTER FOR THE ARTS - BLDG #62)	M-17
SOMMERS GALLERY (ART - BLDG #84)	L-16
TAMARIND INSTITUTE GALLERY (TAMARIND INSTITUTE - BLDG #162)	N-18
UNM ART MUSEUM (CENTER FOR THE ARTS - BLDG #62)	M-17
WELCOME CENTER (BLDG #198)	M-17

 HOSPITAL
  LIBRARY
  PARKING
  INFORMATION
  FOOD/DINING